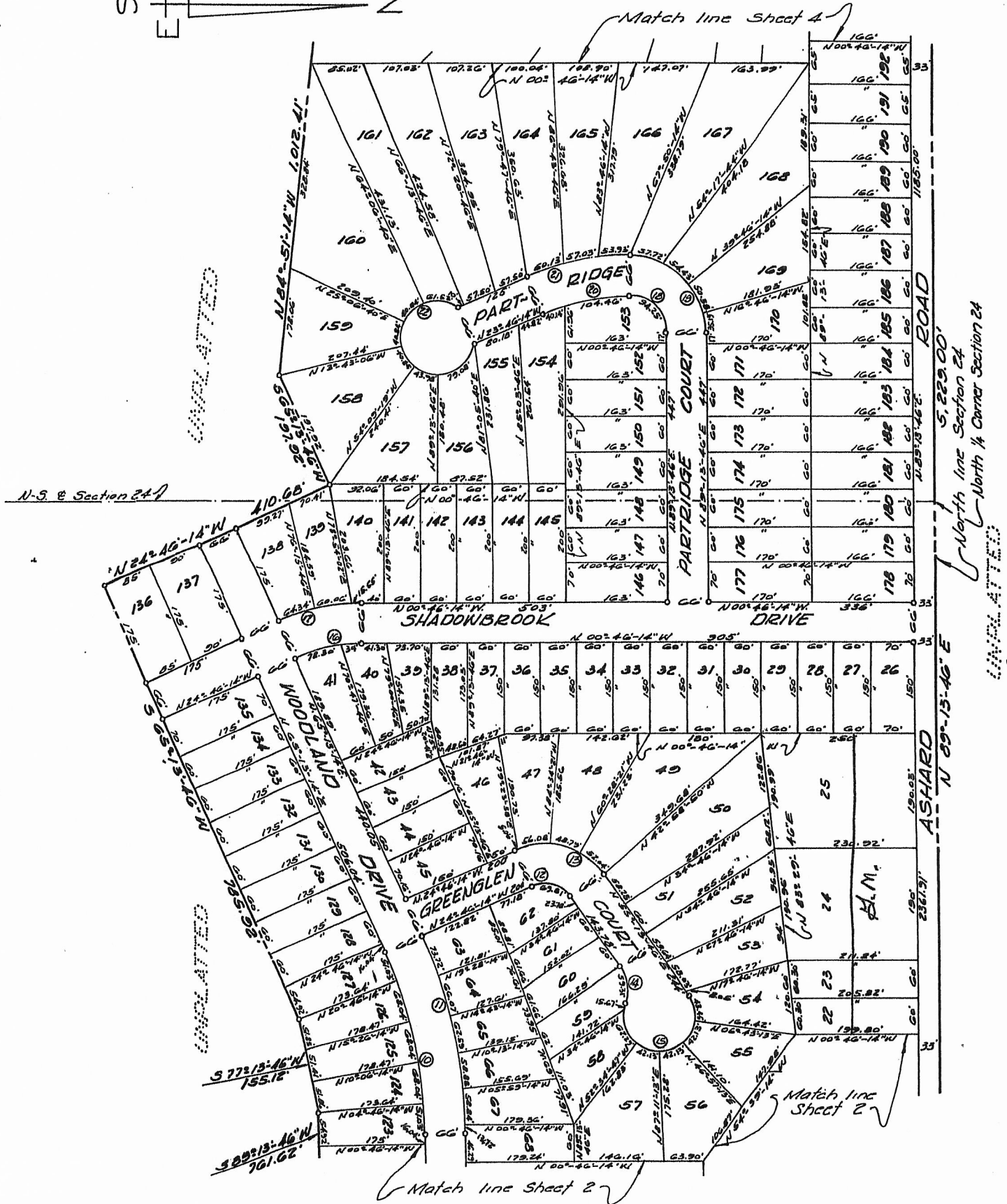
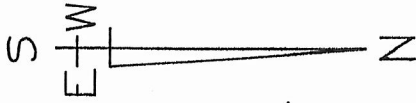


"WOODLAND HEIGHTS"

BEING A SUBDIVISION PART OF THE NORTH 1/2 OF SECTION 24, TOWN 18 NORTH, RANGE 6 WEST, FREEMAN TOWNSHIP, CLARE COUNTY, MICHIGAN

Pg. 1



N-S. E Section 24

North line Section 24
North 1/4 Corner Section 24

Match line Sheet 2

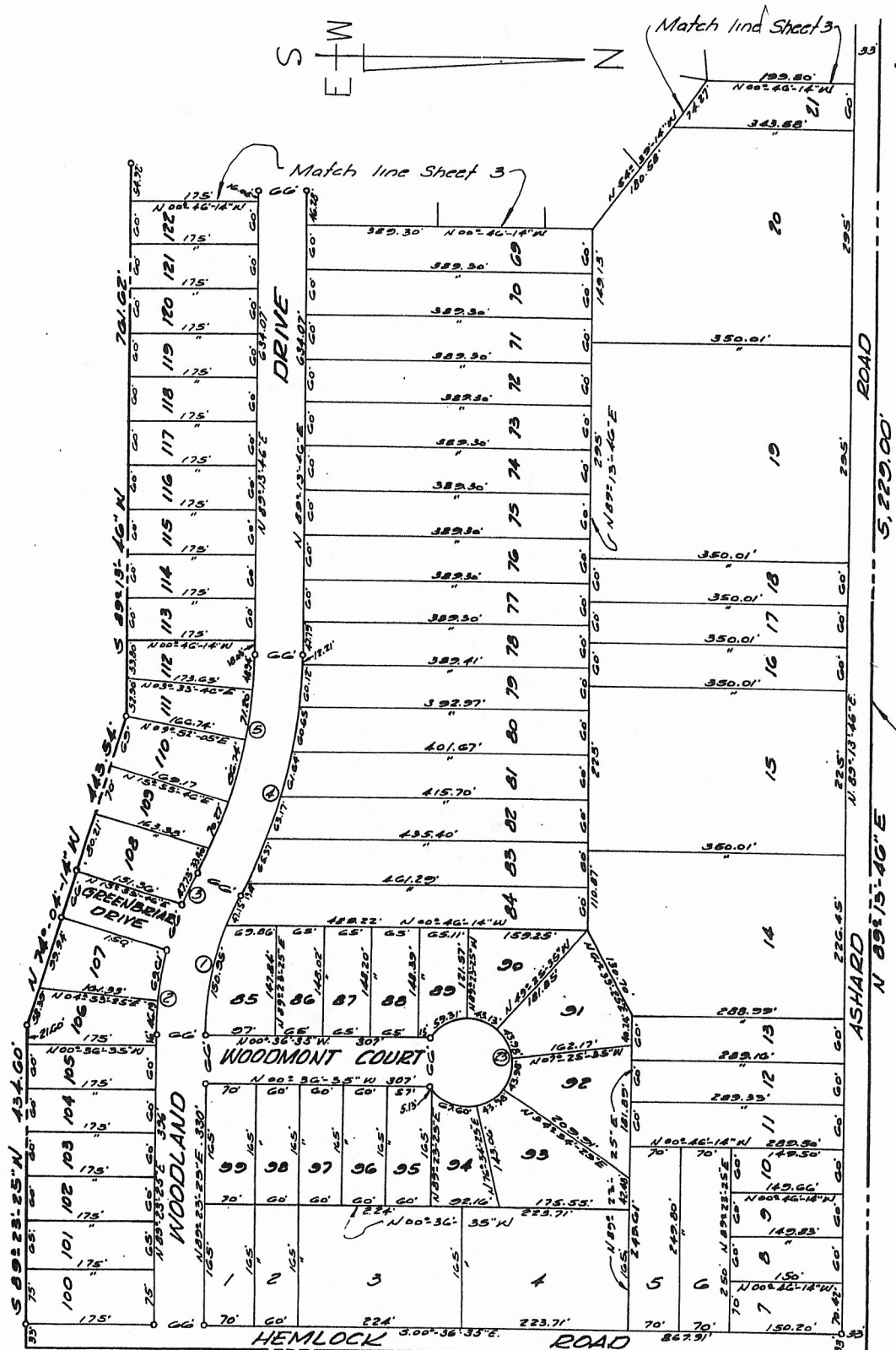
Match line Sheet 2

Match line Sheet 4

"WOODLAND HEIGHTS"

BEING A SUBDIVISION PART OF THE NORTH 1/2 OF SECTION 24, TOWN 18 NORTH, RANGE 6 WEST, FREEMAN TOWNSHIP, CLARE COUNTY, MICHIGAN

PG. 2



East Line Section 24
UNPLATTED

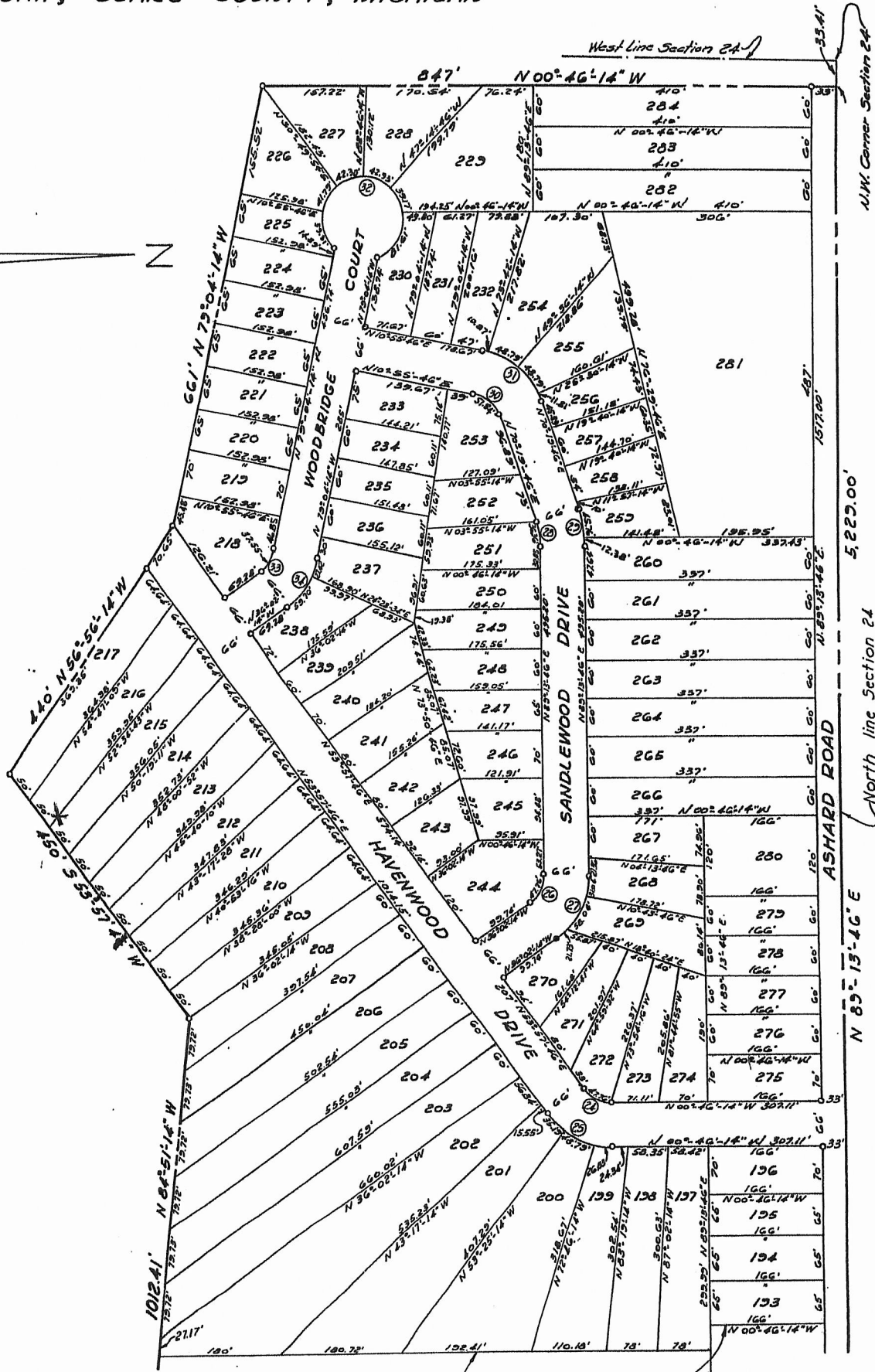
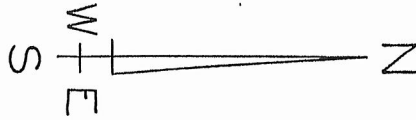
Corner Section 24
P.G.W.
Beginning

North Line Section 24
UNPLATTED

"WOODLAND HEIGHTS"

BEING A SUBDIVISION PART OF THE NORTH 1/2 OF SECTION 24, TOWN 18 NORTH, RANGE 6 WEST, FREEMAN TOWNSHIP, CLARE COUNTY, MICHIGAN

PG. 3



Match line Sheet 3

CORRECTION

"WOODLAND HEIGHTS NO. 2"

BEING A SUBDIVISION PART OF THE NORTHWEST QUARTER SECTION 24 AND NORTHEAST QUARTER SECTION 25, TOWN 18 NORTH, RANGE 6 WEST, FREEMAN TOWNSHIP, CLARE COUNTY, MICHIGAN

PG. 4

