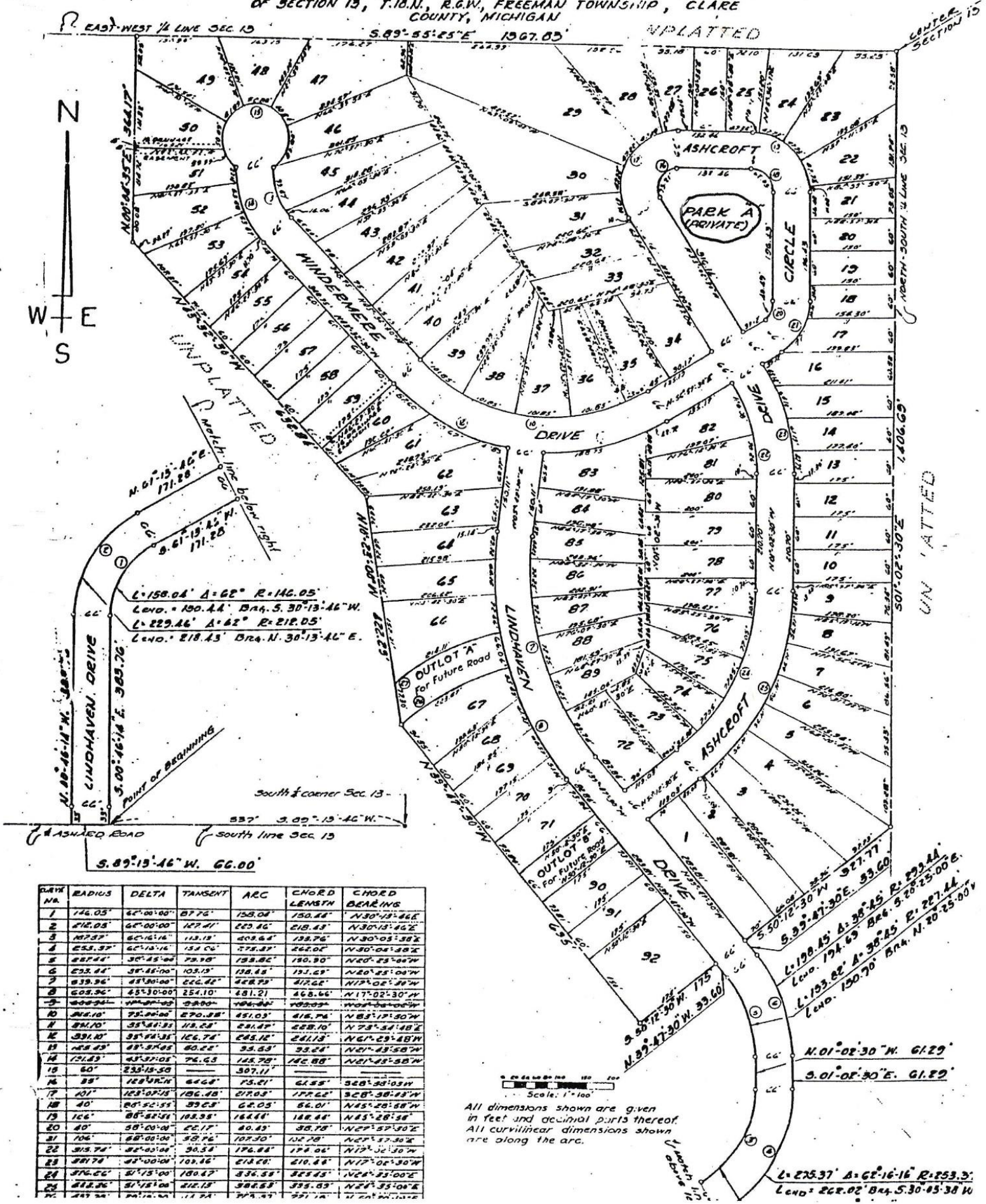


LAKE OF PINES VILLA

BEING A SUBDIVISION PART OF THE SOUTHWEST QUARTER OF SECTION 13, T.10.N., R.G.W., FREEMAN TOWNSHIP, CLARE COUNTY, MICHIGAN



LINE NO.	RADIUS	DELTA	TANGENT	ARC	CHORD LENGTH	CHORD BEARINGS
1	146.05	62°00'00"	87.76	158.08	150.48	N30°13'46"E
2	212.05	62°00'00"	127.41	229.46	218.43	N30°13'46"E
3	278.05	62°00'00"	167.06	310.42	298.38	N30°13'46"E
4	344.05	62°00'00"	206.71	391.38	379.34	N30°13'46"E
5	410.05	62°00'00"	246.36	472.34	460.30	N30°13'46"E
6	476.05	62°00'00"	286.01	553.30	541.26	N30°13'46"E
7	542.05	62°00'00"	325.66	634.26	622.22	N30°13'46"E
8	608.05	62°00'00"	365.31	715.22	703.18	N30°13'46"E
9	674.05	62°00'00"	404.96	796.18	784.14	N30°13'46"E
10	740.05	62°00'00"	444.61	877.14	865.10	N30°13'46"E
11	806.05	62°00'00"	484.26	958.10	946.06	N30°13'46"E
12	872.05	62°00'00"	523.91	1039.06	1027.02	N30°13'46"E
13	938.05	62°00'00"	563.56	1120.02	1107.98	N30°13'46"E
14	1004.05	62°00'00"	603.21	1200.98	1188.94	N30°13'46"E
15	1070.05	62°00'00"	642.86	1281.94	1269.90	N30°13'46"E
16	1136.05	62°00'00"	682.51	1362.90	1350.86	N30°13'46"E
17	1202.05	62°00'00"	722.16	1443.86	1431.82	N30°13'46"E
18	1268.05	62°00'00"	761.81	1524.82	1512.78	N30°13'46"E
19	1334.05	62°00'00"	801.46	1605.78	1593.74	N30°13'46"E
20	1400.05	62°00'00"	841.11	1686.74	1674.70	N30°13'46"E
21	1466.05	62°00'00"	880.76	1767.70	1755.66	N30°13'46"E
22	1532.05	62°00'00"	920.41	1848.66	1836.62	N30°13'46"E
23	1598.05	62°00'00"	960.06	1929.62	1917.58	N30°13'46"E
24	1664.05	62°00'00"	1000.71	2010.58	1998.54	N30°13'46"E
25	1730.05	62°00'00"	1040.36	2091.54	2079.50	N30°13'46"E
26	1796.05	62°00'00"	1080.01	2172.50	2160.46	N30°13'46"E
27	1862.05	62°00'00"	1119.66	2253.46	2241.42	N30°13'46"E
28	1928.05	62°00'00"	1159.31	2334.42	2322.38	N30°13'46"E
29	1994.05	62°00'00"	1198.96	2415.38	2403.34	N30°13'46"E
30	2060.05	62°00'00"	1238.61	2496.34	2484.30	N30°13'46"E
31	2126.05	62°00'00"	1278.26	2577.30	2565.26	N30°13'46"E
32	2192.05	62°00'00"	1317.91	2658.26	2646.22	N30°13'46"E
33	2258.05	62°00'00"	1357.56	2739.22	2727.18	N30°13'46"E
34	2324.05	62°00'00"	1397.21	2820.18	2808.14	N30°13'46"E
35	2390.05	62°00'00"	1436.86	2901.14	2889.10	N30°13'46"E
36	2456.05	62°00'00"	1476.51	2982.10	2970.06	N30°13'46"E
37	2522.05	62°00'00"	1516.16	3063.06	3051.02	N30°13'46"E
38	2588.05	62°00'00"	1555.81	3144.02	3131.98	N30°13'46"E
39	2654.05	62°00'00"	1595.46	3224.98	3212.94	N30°13'46"E
40	2720.05	62°00'00"	1635.11	3305.94	3293.90	N30°13'46"E
41	2786.05	62°00'00"	1674.76	3386.90	3374.86	N30°13'46"E
42	2852.05	62°00'00"	1714.41	3467.86	3455.82	N30°13'46"E
43	2918.05	62°00'00"	1754.06	3548.82	3536.78	N30°13'46"E
44	2984.05	62°00'00"	1793.71	3629.78	3617.74	N30°13'46"E
45	3050.05	62°00'00"	1833.36	3710.74	3698.70	N30°13'46"E
46	3116.05	62°00'00"	1873.01	3791.70	3779.66	N30°13'46"E
47	3182.05	62°00'00"	1912.66	3872.66	3860.62	N30°13'46"E
48	3248.05	62°00'00"	1952.31	3953.62	3941.58	N30°13'46"E
49	3314.05	62°00'00"	1991.96	4034.58	4022.54	N30°13'46"E
50	3380.05	62°00'00"	2031.61	4115.54	4103.50	N30°13'46"E
51	3446.05	62°00'00"	2071.26	4196.50	4184.46	N30°13'46"E
52	3512.05	62°00'00"	2110.91	4277.46	4265.42	N30°13'46"E
53	3578.05	62°00'00"	2150.56	4358.42	4346.38	N30°13'46"E
54	3644.05	62°00'00"	2190.21	4439.38	4427.34	N30°13'46"E
55	3710.05	62°00'00"	2229.86	4520.34	4508.30	N30°13'46"E
56	3776.05	62°00'00"	2269.51	4601.30	4589.26	N30°13'46"E
57	3842.05	62°00'00"	2309.16	4682.26	4670.22	N30°13'46"E
58	3908.05	62°00'00"	2348.81	4763.22	4751.18	N30°13'46"E
59	3974.05	62°00'00"	2388.46	4844.18	4832.14	N30°13'46"E
60	4040.05	62°00'00"	2428.11	4925.14	4913.10	N30°13'46"E
61	4106.05	62°00'00"	2467.76	5006.10	4994.06	N30°13'46"E
62	4172.05	62°00'00"	2507.41	5087.06	5075.02	N30°13'46"E
63	4238.05	62°00'00"	2547.06	5168.02	5155.98	N30°13'46"E
64	4304.05	62°00'00"	2586.71	5248.98	5236.94	N30°13'46"E
65	4370.05	62°00'00"	2626.36	5329.94	5317.90	N30°13'46"E
66	4436.05	62°00'00"	2666.01	5410.90	5398.86	N30°13'46"E
67	4502.05	62°00'00"	2705.66	5491.86	5479.82	N30°13'46"E
68	4568.05	62°00'00"	2745.31	5572.82	5560.78	N30°13'46"E
69	4634.05	62°00'00"	2784.96	5653.78	5641.74	N30°13'46"E
70	4700.05	62°00'00"	2824.61	5734.74	5722.70	N30°13'46"E
71	4766.05	62°00'00"	2864.26	5815.70	5803.66	N30°13'46"E
72	4832.05	62°00'00"	2903.91	5896.66	5884.62	N30°13'46"E
73	4898.05	62°00'00"	2943.56	5977.62	5965.58	N30°13'46"E
74	4964.05	62°00'00"	2983.21	6058.58	6046.54	N30°13'46"E
75	5030.05	62°00'00"	3022.86	6139.54	6127.50	N30°13'46"E
76	5096.05	62°00'00"	3062.51	6220.50	6208.46	N30°13'46"E
77	5162.05	62°00'00"	3102.16	6301.46	6289.42	N30°13'46"E
78	5228.05	62°00'00"	3141.81	6382.42	6370.38	N30°13'46"E
79	5294.05	62°00'00"	3181.46	6463.38	6451.34	N30°13'46"E
80	5360.05	62°00'00"	3221.11	6544.34	6532.30	N30°13'46"E
81	5426.05	62°00'00"	3260.76	6625.30	6613.26	N30°13'46"E
82	5492.05	62°00'00"	3300.41	6706.26	6694.22	N30°13'46"E
83	5558.05	62°00'00"	3340.06	6787.22	6775.18	N30°13'46"E
84	5624.05	62°00'00"	3379.71	6868.18	6856.14	N30°13'46"E
85	5690.05	62°00'00"	3419.36	6949.14	6937.10	N30°13'46"E
86	5756.05	62°00'00"	3459.01	7030.10	7018.06	N30°13'46"E
87	5822.05	62°00'00"	3498.66	7111.06	7099.02	N30°13'46"E
88	5888.05	62°00'00"	3538.31	7192.02	7180.98	N30°13'46"E
89	5954.05	62°00'00"	3577.96	7272.98	7261.94	N30°13'46"E
90	6020.05	62°00'00"	3617.61	7353.94	7342.90	N30°13'46"E
91	6086.05	62°00'00"	3657.26	7434.90	7423.86	N30°13'46"E
92	6152.05	62°00'00"	3696.91	7515.86	7504.82	N30°13'46"E

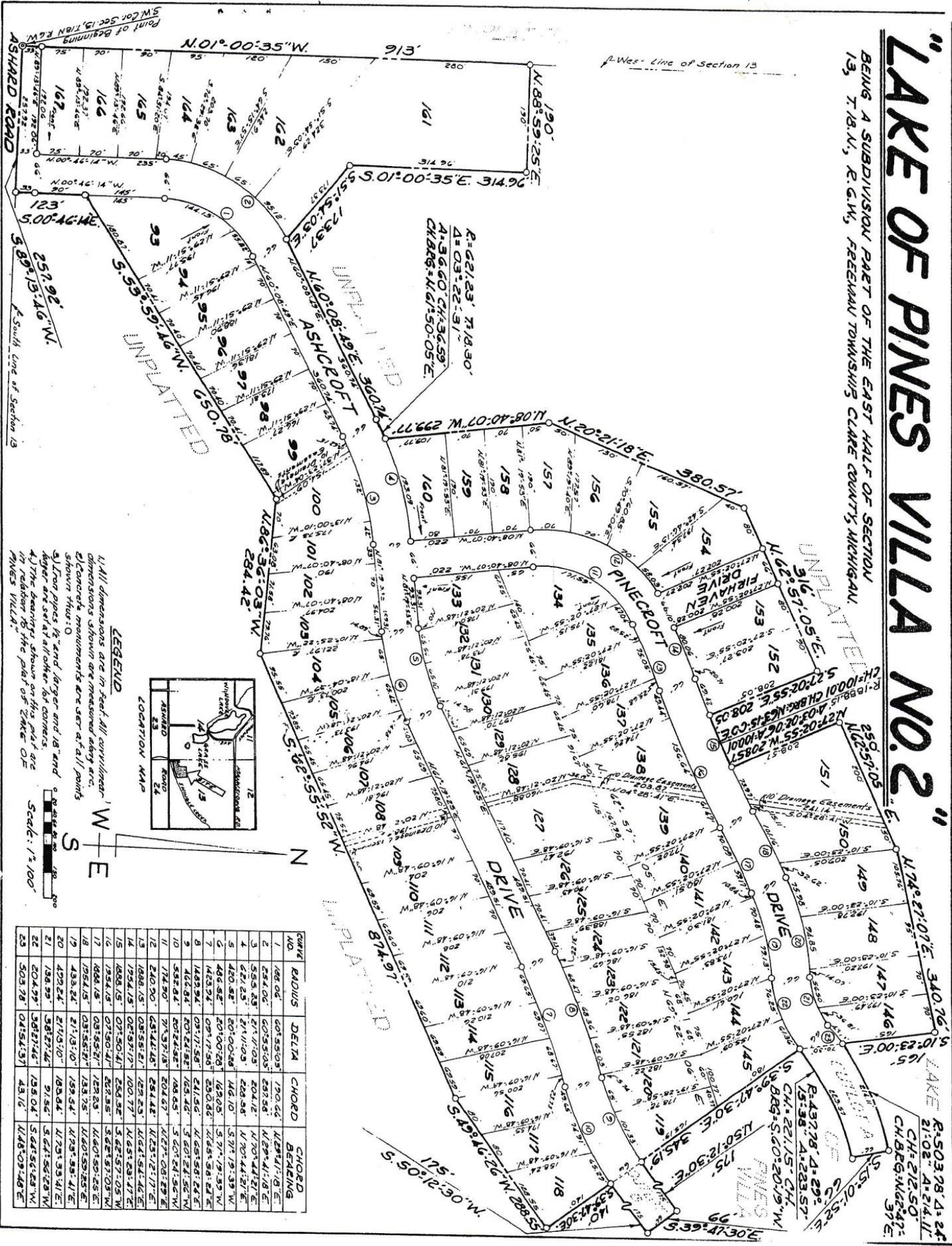
All dimensions shown are given in feet and decimal parts thereof. All curvilinear dimensions shown are along the arc.

$L = 198.45 \Delta = 38.45 R = 293.44$
 $L = 193.82 \Delta = 38.45 R = 287.44$
 $L = 193.82 \Delta = 38.45 R = 287.44$
 $L = 275.37 \Delta = 62.16-16 R = 253.3$
 $L = 268.02 \Delta = 5.30-45-38 W$

"LAKE OF PINES VILLA NO. 2"

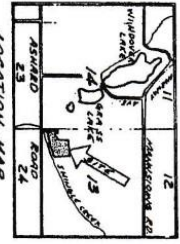
BEING A SUBDIVISION PART OF THE EAST HALF OF SECTION 13, T.18.N., R.6.W., FREEMAN TOWNSHIP CLARE COUNTY, MICHIGAN.

SHEET 2 OF 2 SHEETS



LEGEND

- All dimensions are in feet. All curvilinear dimensions shown are measured along arc.
- Concrete measurements are set at all points shown thus: O
- Iron pipes 1/2" and larger end 1/8" and larger are set at all other lot corners.
- The bearings shown on this plat are in relation to the plat of "LAKE OF PINES VILLA"



CURVE NO.	RADIUS	DELTA	CHORD	CHORD BEARING
1	166.06	0°55'03"	190.66	N.294°11'18"E
2	554.06	0°55'03"	637.58	N.294°11'18"E
3	554.06	0°55'03"	637.58	N.294°11'18"E
4	621.25	2°11'03"	628.98	N.70°41'21"E
5	450.82	2°01'00"	466.10	S.77°19'33"W
6	456.92	2°01'00"	463.05	S.77°19'33"W
7	1423.94	0°51'17"	1430.86	N.65°58'21"E
8	1423.94	0°51'17"	1430.86	N.65°58'21"E
9	1423.94	0°51'17"	1430.86	N.65°58'21"E
10	1423.94	0°51'17"	1430.86	N.65°58'21"E
11	172.90	7°53'18"	204.67	N.27°08'27"E
12	210.90	6°51'46"	251.48	N.27°08'27"E
13	1688.15	0°51'51"	1693.73	N.62°51'44"E
14	1688.15	0°51'51"	1693.73	N.62°51'44"E
15	1688.15	0°51'51"	1693.73	N.62°51'44"E
16	1688.15	0°51'51"	1693.73	N.62°51'44"E
17	1688.15	0°51'51"	1693.73	N.62°51'44"E
18	1688.15	0°51'51"	1693.73	N.62°51'44"E
19	433.24	2°11'10"	439.54	N.70°41'21"E
20	433.24	2°11'10"	439.54	N.70°41'21"E
21	126.93	3°58'14"	131.56	S.62°57'05"W
22	204.93	3°58'14"	215.04	S.62°57'05"W
23	503.78	0°25'43"	43.16	N.48°09'48"E