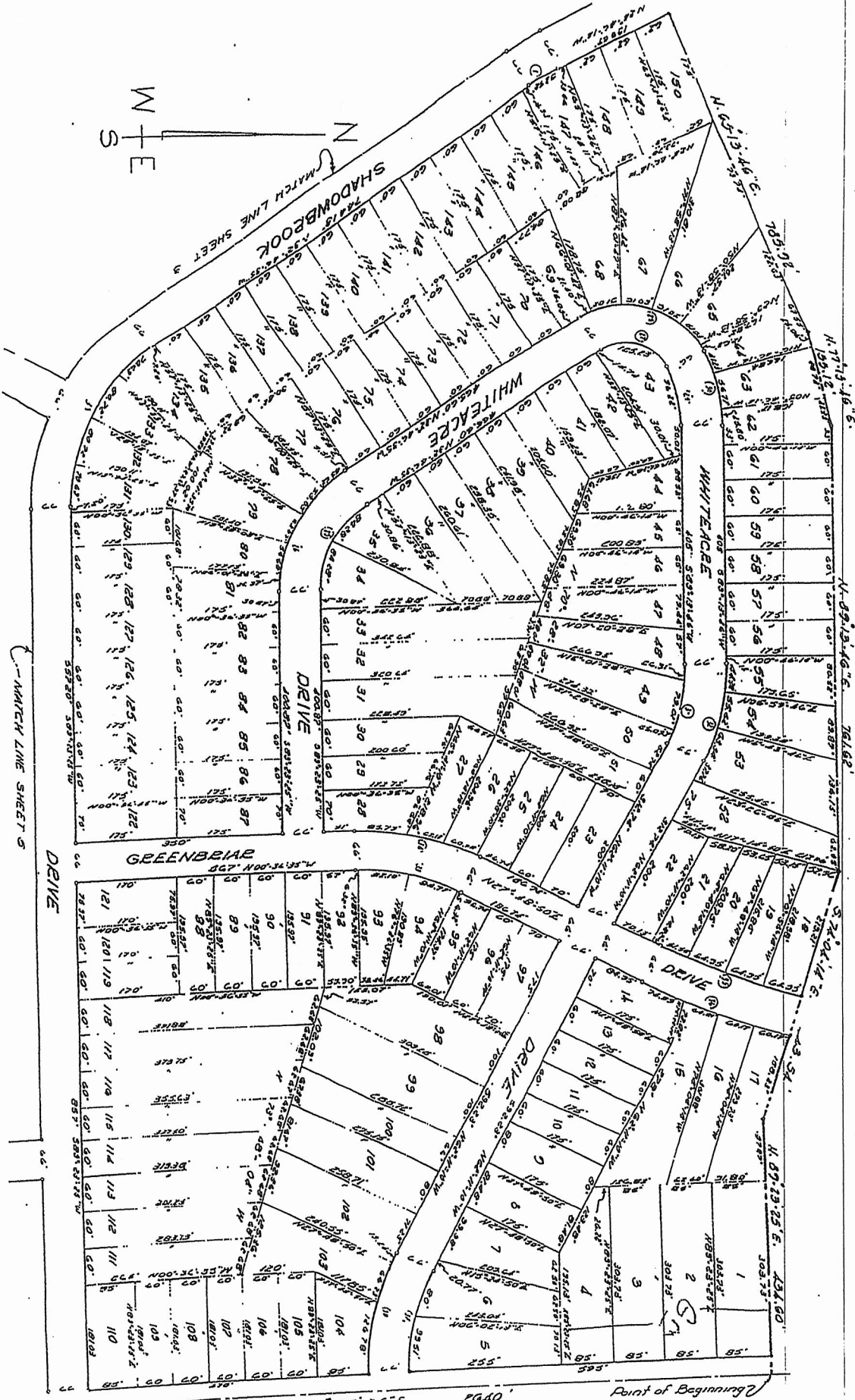


"BIRCHWOOD HEIGHTS"

BEING A SUBDIVISION PART OF SECTION 24,
TOWN 18 NORTH, RANGE 6 WEST, GREENMAN TOWNSHIP,
CLARE COUNTY, MICHIGAN

PG. 1

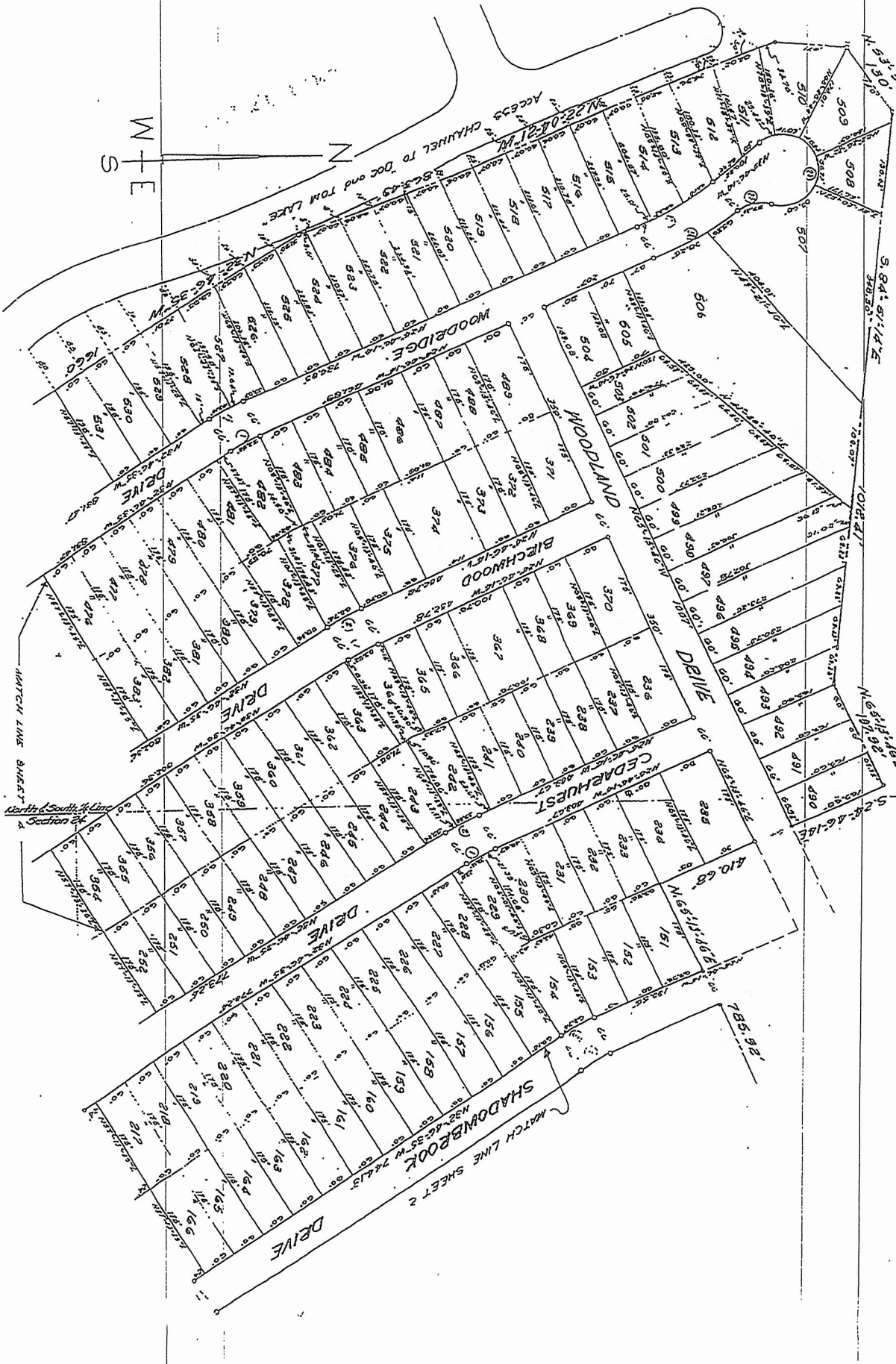


Point of Beginning
S 0° 56' 35" E. 2640'
East Line Section 24

"BIRCHWOOD HEIGHTS"

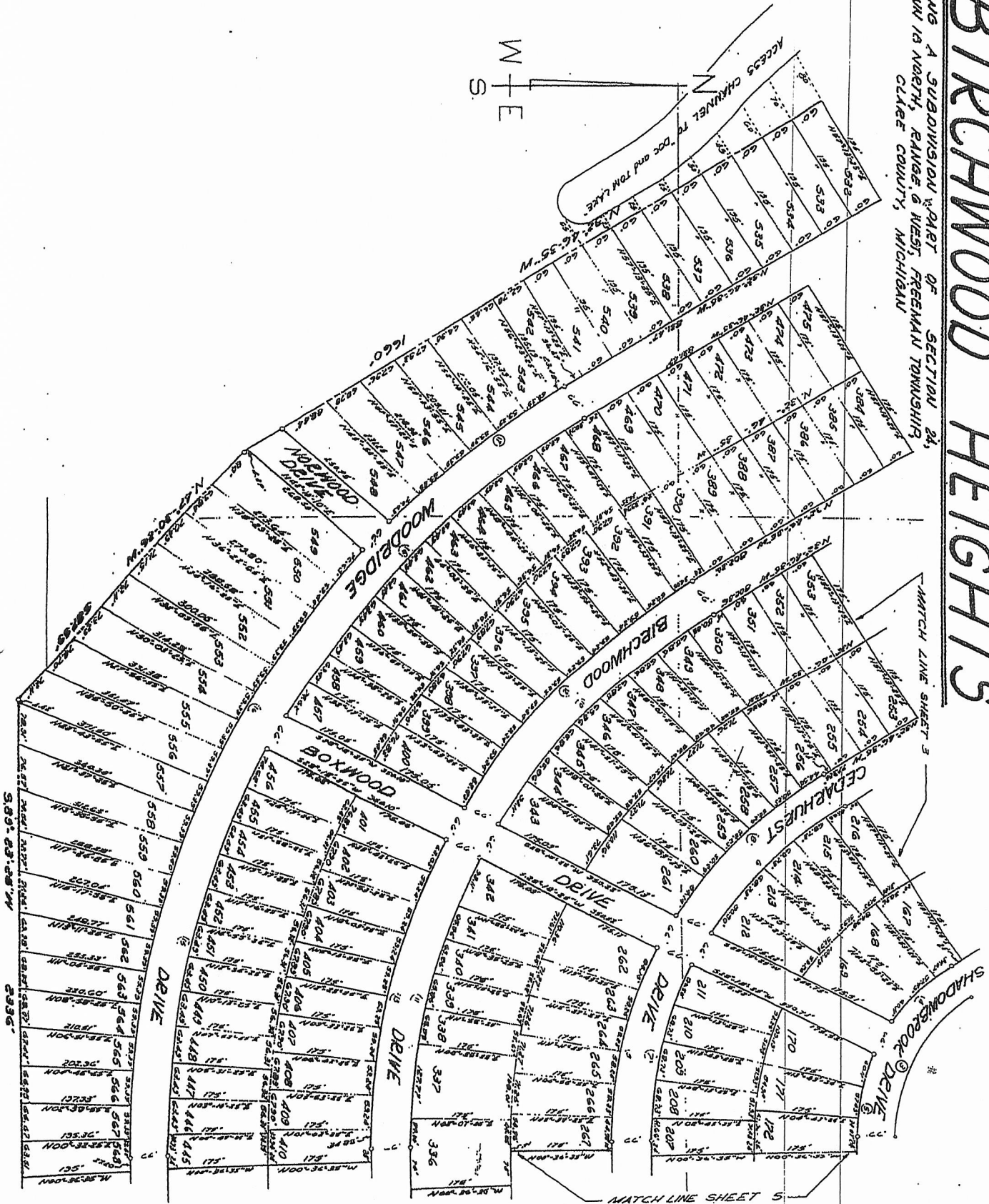
BEING A SUBDIVISION PART OF SECTION 24,
TOWN 18 NORTH, RANGE 6 WEST, FREEMAN TOWNSHIP,
CLARE COUNTY, MICHIGAN

PG. 2



BEING A SUBDIVISION PART OF SECTION 24,
TOWN 18 NORTH, RANGE 6 WEST, FREEMAN TOWNSHIP,
CLARE COUNTY, MICHIGAN

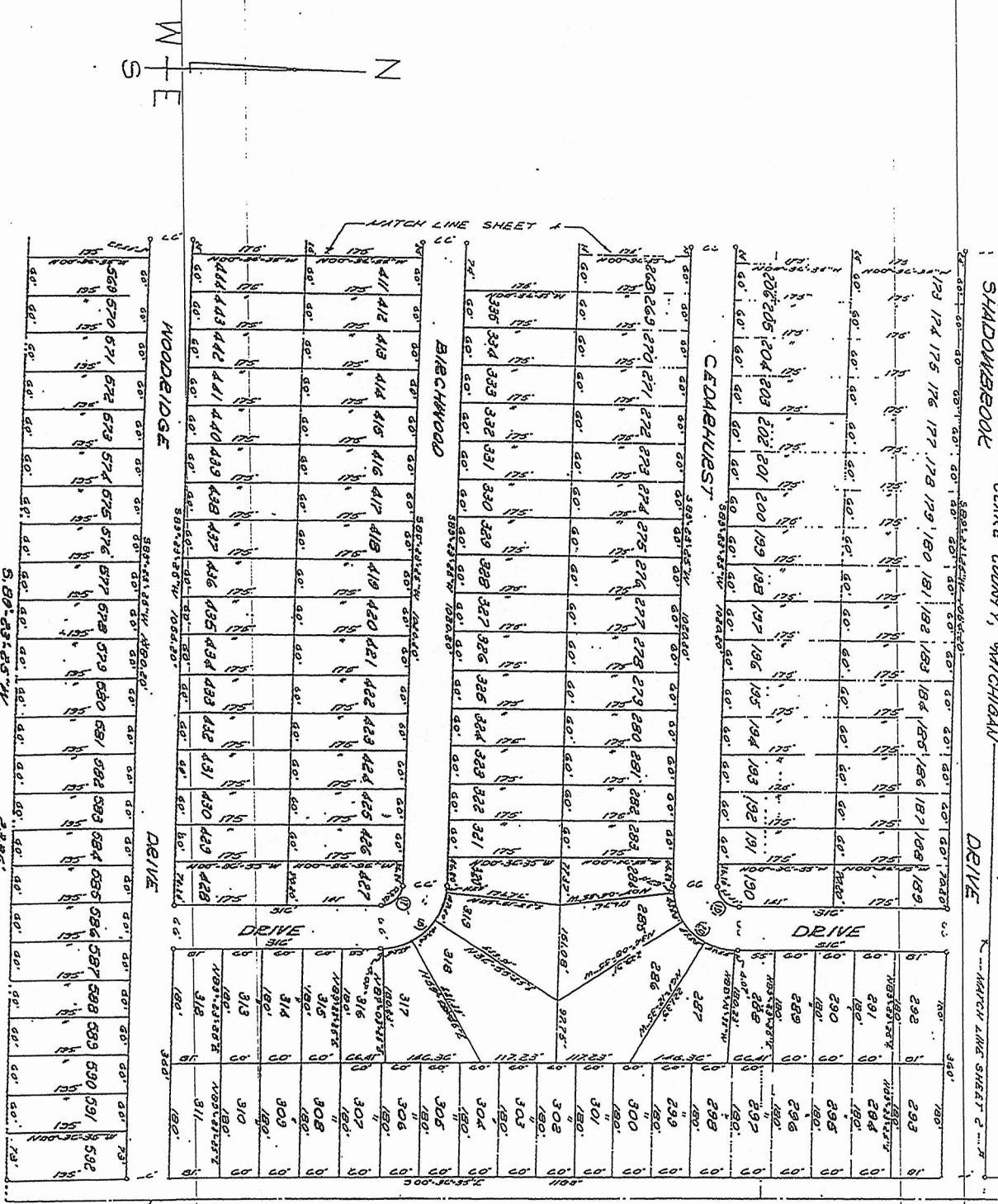
BIRCHWOOD HEIGHTS



BIRCHWOOD HEIGHTS

BEING A SUBDIVISION PART OF SECTION 24,
TOWN 18 NORTH, RANGE 6 WEST, FREEMAN TOWNSHIP,
CLARE COUNTY, MICHIGAN

PG. 4



East Line Section 24

2640

7.56-56-52